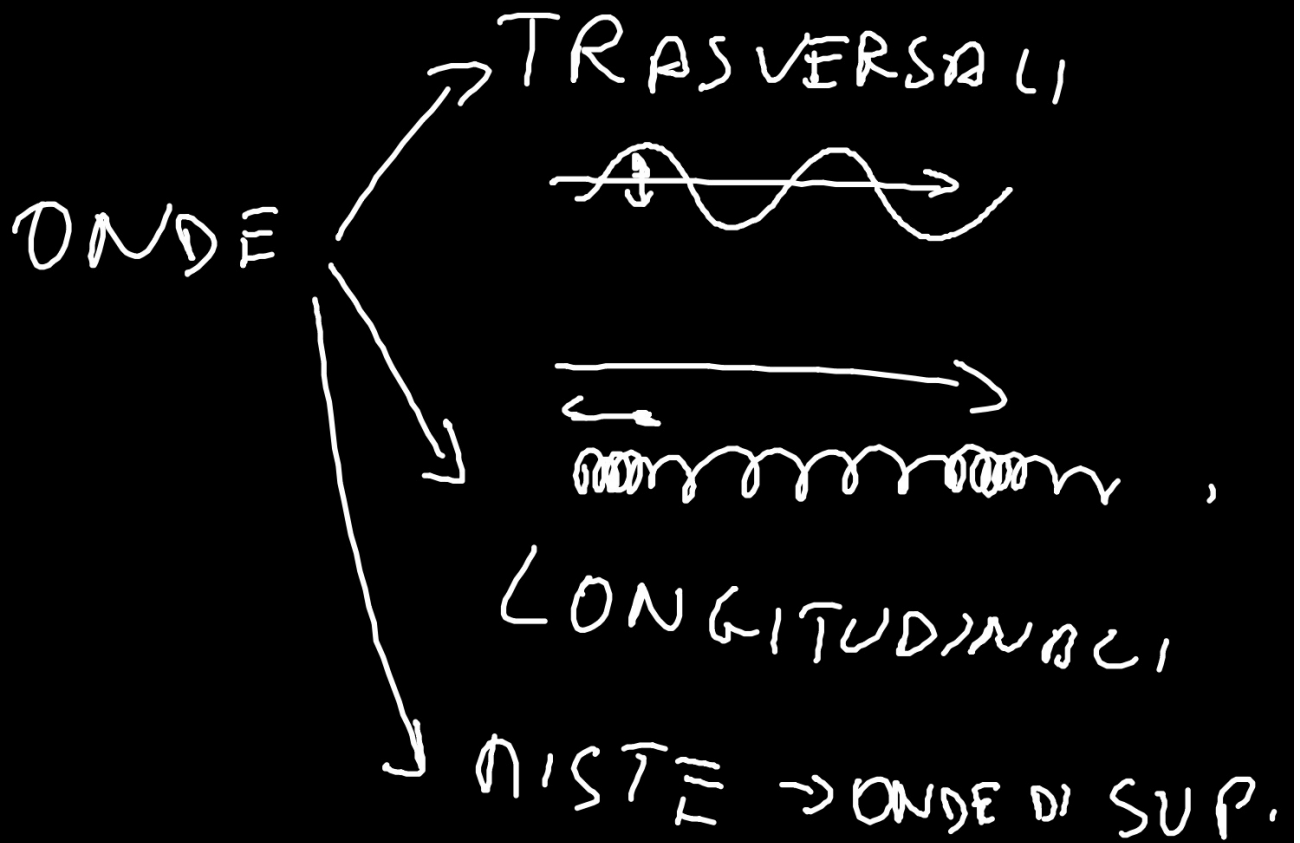
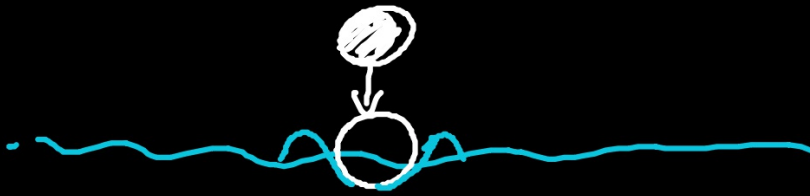


ONDA

=

PERTURBAZIONE
CHE SI PROPAGA
NELLO SPAZIO





ONDE DI SUPERFICIE

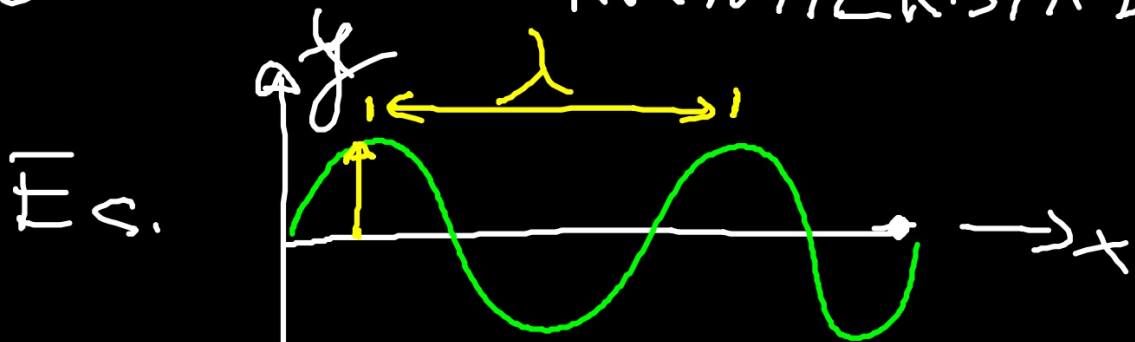
=

MISTE

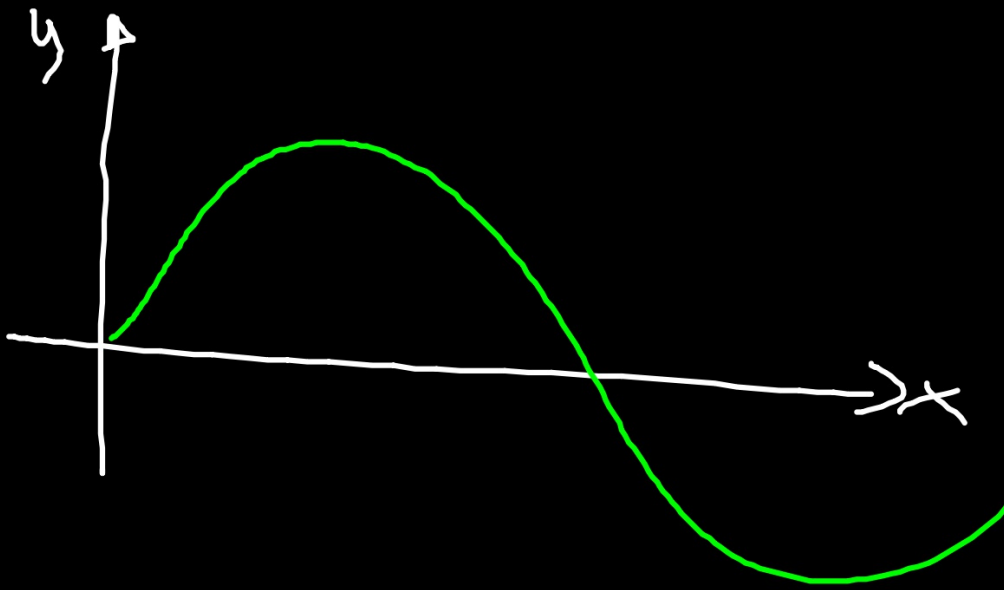
→ LONG.

→ TRASV.

ONDA → CARATTERISTICHE



LUNGHEZZA D'ONDA
 λ = DISTANZA TRA DUE
PICCHI SUCCESSIVI



$$y = \sin \left(\underbrace{2\pi \frac{x}{\lambda}}_{\text{FASE}} \right)$$

$$v = \frac{\lambda}{T}$$
$$= \lambda \cdot \nu$$

VEL. DELL'ONDA
(VEL. DI FASE)

$$E_s.. \quad \lambda = 2.5 \text{ cm}$$
$$\quad \quad \quad \perp 0,025 \text{ m}$$

$$\nu = 0.5 \text{ Hz}$$

$$T = 2 \text{ s}$$

$$v = \lambda \cdot \nu = 1,25 \text{ cm/s}$$

ONDA $\left\{ \begin{array}{l} \lambda \\ \nu \end{array} \right\} \rightarrow \nu = \frac{c}{\lambda}$

